

GBC®

75
YEARS

PRINT FINISHING
SOLUTIONS



TruSens



Kensington®



Swingline®

GBC *Printing Transformed*

With over 75 years of experience, GBC is a trusted expert in print finishing solutions. Offering a broad range of professional binding and lamination equipment and supplies, GBC helps you transform your printed materials from ordinary into extraordinary.

GBC is not just limited to print finishing solutions, we are a part of the ACCO Brands family. ACCO Brands Corporation is one of the world's largest suppliers of branded school, office and consumer products and finishing solutions. We design, market and sell products in more than 100 countries around the world. Along with SEAL® laminating equipment and supplies, We also Offer TruSens® Air purifiers, Quartet® glass boards/signage, Swingline® staplers/punches and Kensington® computer accessories.

For fast, easy ordering you can call one of our courteous and knowledgeable customer service representatives at **800.463.2545** or order online **24 hours a day at www.GBC.com**

Inside this catalog you will find our complete assortment of GBC Binding, Laminating, Shredding as well as Wellness products, Communication tools like glass boards/signage and Computer accessories. Find out how you can stand out and be more profitable by finishing with an expert.

Call from 7 am to 7 pm EST Monday - Friday

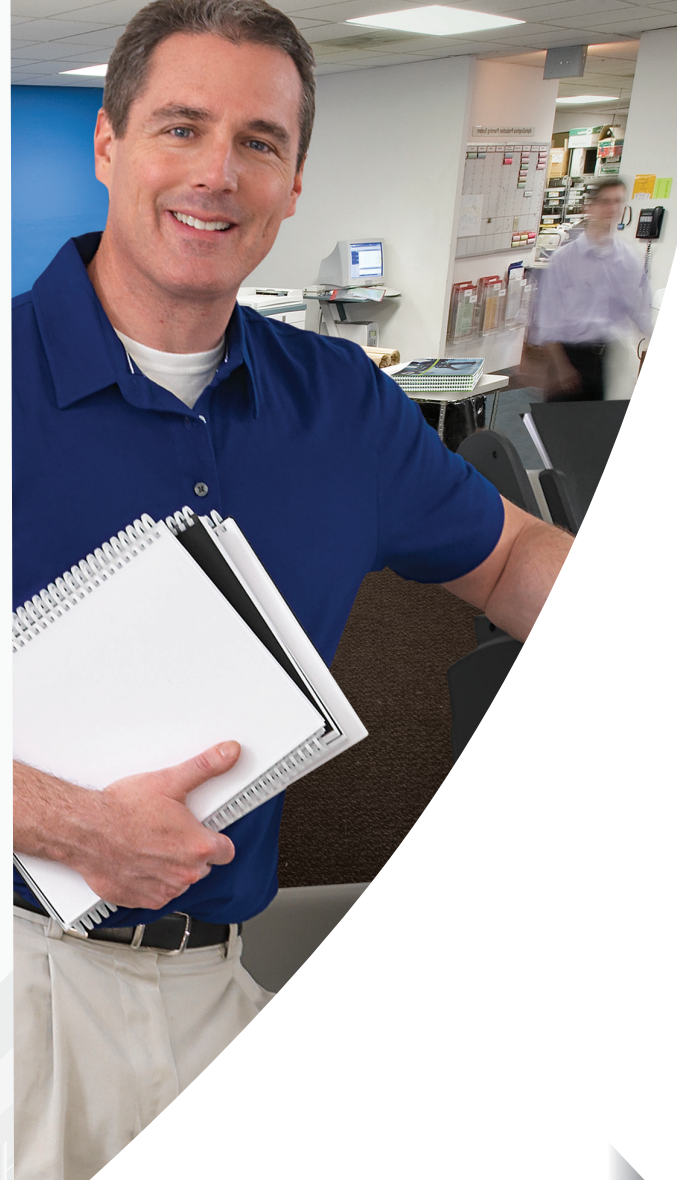
800.463.2545

or shop online anytime:

www.GBC.com

Repair Service / Technical Support

For repair service and/or technical support, please call **800.463.2545** or visit GBC.com/service-support-center and fill out the service request form to request technical support.



What's inside

Table Top Punches	3	Film	19
Finishers	3	Trimmers	21
Punch & Bind Combinations	6	Shredders	22
Automated Finishing Solutions	8	Banner Stands	27
Binding Accessories	9	Additional Solutions:	
Binding Covers	10	Kensington	28
Pouch Laminators	11	Additional Solutions:	
Pouch Lamination Supplies	11	TruSens	29
Pouch Lamination Supplies	11	Additional Solutions:	
Pouch Lamination Accessories	12	Quartet	30
Table Top Laminators	12	Additional Solutions:	
Xyron Laminators	15	Swingline	32
Wide Format Laminators	16	Customized Products	33
Flatbed Applicator for Rigid & Flex Media	18	Extended Maintenance Agreement	36

Table Top Punches

MP2000 Economy Punch

Ideal for offices, the single-pattern punch is available in several versions that are compatible with our most popular binding styles.

- Automatic reverse to prevent paper jams
- Open throat for punching odd-sized items
- Adjustable paper alignment guide



Item #	Description
7706100	MP2000PB CombBind®, 19-hole
7706000	MP2000C4 Color Coil®, 4:1, .2475 pitch
7706050	MP2000W3 WireBind®, 3:1 pitch, square holes

MP2500iX Powerful, Productive Punch

This heavy-duty punch can handle up to 16,000 sheets an hour and is quiet enough to use in office environments.

- Up to 11 interchangeable punch pattern die sets available (sold separately)
- Open ended throat for punching odd-sized sheets
- Automatic reverse to prevent paper jams
- Adjustable paper alignment guide



Item #	Description
7704300	MP2500iX punch

* Various dies available

Magnapunch™ Pro Best-in-Class

With unmatched speed and durability, the GBC Magnapunch Pro Interchangeable Die Punch is best-in-class among high volume desktop punches.

- Sleek, metal cover offers a clear view of the die set ruler and pin location decal for easy alignment
- Sturdy edge guide features an adjustable sliding knob/screw system to accurately adjust paper size
- Large chip tray collects paper chips from up to 40,000 sheets so you can empty the tray less often
- Half-second punch cycle with flywheel technology allows you to complete more jobs in less time

Item #	Description
7705643	Magnapunch Pro



No complicated set-ups
No punching errors
No waste



Finishers - Twin Loop Wire

MC12 12" Manual Wire Closer

This machine's manual operation and universal handle make wire binding easy for all users.

- Spine-size adjustment knobs
- Durable, heavy-duty design
- Non-slip rubber feet



Item #	Description
1770600	12" Manual Wire Closer



To view our full line of products visit our website GBC.com or call us for more information

Service can be requested on GBC.com or through our call center at 800.463.2545

Finishers - Twin Loop Wire



TL2900 Electric WireBind Finisher

Wire binding is faster and easier with this electric finisher. A dual load-and-crimp station eliminates the extra step of moving documents for loading. Just hang the spine, load the paper and close with the touch of a button.

Item #	Description
7301200	12" WireBind finisher

WireBind Spines

Size	Sheet capacity	Black	White	Silver	Bronze	Gray	Navy Blue
2:1 Pitch							
5/8"	125	x	x	x			
3/4"	150	x	x	x			
7/8"	175	x		x			
1"	200			x			
3:1 Pitch							
1/4"	40	x	x	x			
5/16"	60	x		x			x
3/8"	75	x	x	x	x		x
7/16"	90	x		x			
1/2"	100	x		x			x
9/16"	110	x	x				

Sheet capacity based on 20 lb bond paper. 100 spines/box

Finishers - Coil

Color Coil Spines - 4:1 Pitch

Size	Sheet capacity	Black	White	Clear	Navy Blue
6 mm	30	x	x	x	x
8 mm	45	x	x	x	x
10 mm	70	x	x	x	x
11 mm	80	x			
12 mm	90	x	x	x	x
13 mm	100	x			
14 mm	110	x			
16 mm	125	x	x	x	x
18 mm	140	x			
20 mm	160	x	x	x	x
22 mm	175	x			
25 mm	200	x	x	x	x
30 mm	240	x			
33 mm	265	x			

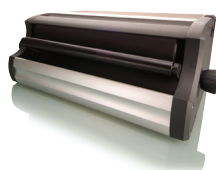
100 pieces per box
Sheet capacity based on 20 lb. bond paper

Finishers - Coil

CC2700 High Volume Electric Color Coil Inserter

The dual-roller system gets Color Coil spines through punched sheets with reliable ease, and three adjustable spine-size settings to ensure instant accuracy. A built-in spine former shapes stacks for easier binding.

- One crimper hand tool included
- Binds sheets up to 12"

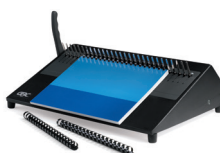


Item #	Description
7301080	CC2700 Color Coil inserter

Finishers - Cerlox

16DB Manual CombBind Finisher

This manual finisher makes binding presentations quick and easy with minimal fuss. Left handed lever operates with an easy pull and push motion. Locking spine-size settings for faster operation, lightweight and portable. Binds documents up to 16".



Item #	Description
7300200	16" Manual Plastic Binding Closer

PB2600

High capacity Electric CombBind Finisher

Binds up to 300 presentations in an hour. Just set your spine size. Push the button or foot pedal to open, load pages and push again to close.



Item #	Description
7301000	PB2600 Electric CombBind finisher

CombBind Spines - 19

Size	Sheet capacity	Black	White	Navy Blue
1/4"	25	x		
5/16"	40	x		x
3/8"	55	x	x	x
7/16"	70	x		
1/2"	85	x	x	x
9/16"	105	x		
5/8"	125	x	x	x
3/4"	150	x	x	
1"	200	x		
1-1/4"	265	x		
1-1/2"	320	x		
*1-3/4"	375	x		
*2"	425	x		

*50 pieces per box / Sheet capacity based on 20 lb. bond paper

Create an impressive presentation with these binding elements - available in multiple/different/a variety of colors

Choose the best spine for your presentation and count on consistently great looking results



Punch & Bind Combinations



C800Pro Electric CombBind

Punches up to 25 sheets and binds up to 425 sheets. Includes a foot pedal for fast, hands-free electric punch operation. Adjustable pins punch any size document up to 12" wide. Adjustable punch depth. Extra large drawer for punch chips.

Item #	Description
27170F	C800 pro CombBind Machine

Punch & Bind Combinations

System One VeloBind

Get professional-looking VeloBind results with this all-in-one punch and bind system. The **manual punch** handle is convenient for right-or left-handed use.

System Two VeloBind

For moderate-volume VeloBind jobs, this **electric punch** and bind system combines power with space efficiency.

System Three Pro VeloBind

This heavy-duty system easily punches and binds large VeloBind jobs. The pressure bar lifts up and returns to indicate when binding is complete and is adjustable for faster turnaround on smaller presentations. Punch more efficiently with your choice of push-button, punch-sensor or foot-pedal control.



Item #	Description
9707023	System One VeloBind 1" Electric Binder/Manual Punch
9707030	System Two VeloBind 2" Electric Punch/Binder
9707102	System Three Pro VeloBind 3" Electric Punch/Binder

VeloBind Spines

Size	Sheet capacity	Box Qty
11" x 1"	250	100 sets
11" x 2"	500	100 sets
11" x 3"	750	100 sets
8-1/2" x 1"	250	100 sets
8-1/2" x 3"	750	100 sets

*For color information contact your sales representative
All sheet capacities based on 20 lb. bond paper*

SureBind

Size	Sheet Capacity	Spool/Box
11" x 1"	250	100 sets

*For color information contact your sales representative
All sheet capacities based on 20 lb. bond paper*



To view our full line of products visit our website or call us for more information

Choose the best spine for your presentation and count on consistently great looking results





Protect YOUR investment by purchasing an **Extended Maintenance Agreement** from GBC



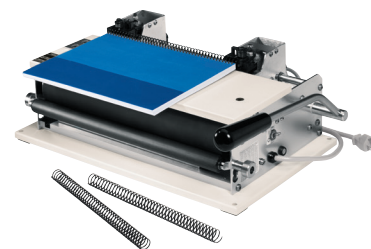
GBC offers all equipment purchasers the opportunity to protect their investment.

Service can be requested through our call center at 800.463.2545

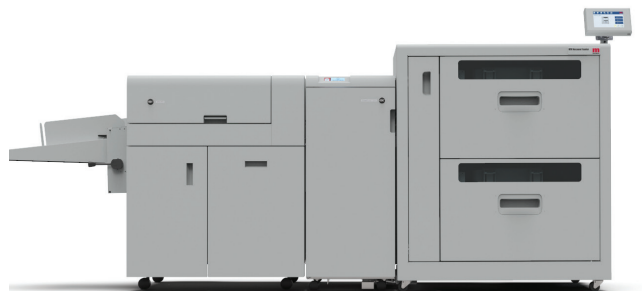
CI-12 Automated Color Coil Inserter

Unique, adjustable dual-roller system quickly threads coil through punched stacks.

- Multiple spine-size settings for faster operation
- Adjustable cutting and crimping for secure results
- Ergonomic lever ensures smooth and easy crimping
- Binds sheets up to 12"



Item #	Description
Z032300000	Electric Coil inserter (W Cut & Crimp Knives)



Nearline Punch and Bind Solution

The Nearline Punch and Bind has the ability to perform punching, collating and binding operations, along with creasing and perforating, making it the most versatile finishing solution on the market, dramatically reducing manual "touches" on the shop floor.

- This solution consists of StreamPunch™ VFX, eWire™ VFX and a Vacuum feeder.
- Double creasing and perforation are also supported
- Great for creating calendars, tickets, training materials, menus, notebooks, mailers and more!

Item #	Description
WSM7723400CA	GBC StreamPunch VFX
WSM7723500CA	GBC eWire VFX
WSM7723300CA	Plockmatic VFX Vacuum feeder
WSM770000-CA	Output Tray
WSM770003-CA	Output Stacker

Binding Accessories

Debinder

Special tool for debinding hot knife VeloBind & SureBind spines.

Crimpers

- Cuts and crimps coil sizes from 6 mm to 33 mm
- Red dot facing upward indicates the proper position for crimping
- For 4:1 and 5:1 Round

Binding cabinet

This locking cabinet is built to support Binding machines up to 35" and 200 lbs while providing storage for supplies. It rolls easily to your work area on casters and features a pullout extension for added workspace and convenience.



Die Set Cabinet

Binding cabinet



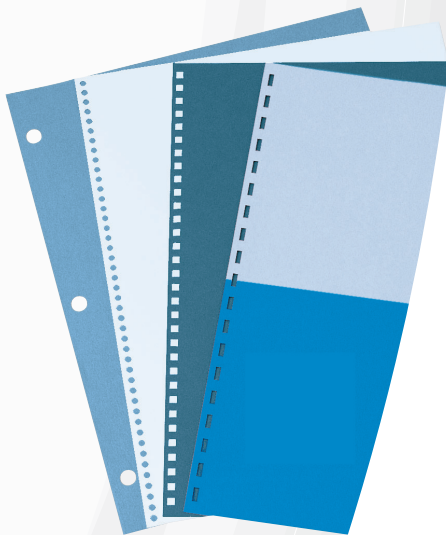
Item #	Model	Description
7705047	Debinder	Strip Binding Tool
7300450	Crimpers	Coil Hand Crimping Pliers
Z1154314	Binding cabinet	Binding/Laminating cabinet

Binding Covers

Take presentations to the next level with this high-tech binding spine...



WireBind lets pages lie flat with 360° rotation for convenient note taking and photocopying, and it permanently binds documents. That way you get the peace of mind in knowing your presentations always look great and stay secure.



See pages 33-35 for customization

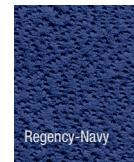


Clear View®

These covers are spill and tear proof. They show off your title pages and come in a wide variety of thicknesses.

Type	Description	Size	Window	Box Qty	Clear	Frost
Standard	Square Corners (Flush Cut) - 7 mil	8-1/2" x 11"	No	100 pieces	x	
	Square Corners (Flush Cut) - 7 mil	9" x 11"	No	100 pieces	x	
Premium	Square Corners (Flush Cut) - 14 mil	8-1/2" x 11"	No	100 pieces	x	x
	Square Corners (oversized) - 10-14 mil	8-3/4" x 11-1/4"	No	100 pieces	x	x

Standard covers are unpunched. Letter size 19 hole Clear covers also available
 Premium covers are unpunched, 19-hole, 4:1 round or 3:1 Square.
 Premium Plus covers are 19-hole or unpunched



Standard Covers

Type	Description	Size	Window	Box Qty	Navy	Black	Charcoal
Linen	Square Corners (Flush Cut)	8-1/2" x 11"	No	100 sets	x	x	x
	Round Corners (Oversized)	8-3/4" x 11-1/4"	No	100 sets	x	x	
Regency	Square Corners (Flush Cut)	8-1/2" x 11"	No	100 sets	x	x	
	Round Corners (Oversized)	8-3/4" x 11-1/4"	No	100 sets	x	x	

Legal Covers

Type	Description	Size	Window	Box Qty	Black	Clear
Regency	Square Corners	11" x 17"	No	100 pieces	x	
ClearView	Square Corners (Flush Cut) - 9mil	11" x 17"	No	100 pieces		x

Pouch Laminators

HeatSeal® Professional Grade Pouch Laminators

One-touch keypad delivers easy, efficient use for photo-quality finishing.

- 4 rollers deliver superior lamination quality and consistency
- Uses 3 to 10 mil pouches
- Motorized reverse function to clear pouch jams



Item #	Description
1700660	HeatSeal H450 13" laminator - up to 19.25" per minute (heated plate only)
1700300	HeatSeal H600pro 13" laminator - 25" per minute (heated plate and rolls)
1700500	HeatSeal H700pro 18" laminator - 60" per minute (heated plate and rolls)

Pouch Applications

- Signs
- I.D. Cards
- Calendars
- Certificates
- Mouse Pads
- Photographs
- POP Signage
- Business Cards

Pouch Lamination Supplies

HeatSeal® Ultra Clear Pouches

Document Size

Description	Dimensions	Gauge	Qty/Box
Letter - Long Side Seal	9" x 11-1/2"	3 mil	100
		5 mil	100
		10 mil	50
Legal	9" x 14-1/2"	10 mil	50
Menu	11.5" x 17-1/2"	3 mil	100
		10 mil	50

HeatSeal® Crystal Clear Pouches

Document Size

Description	Dimensions	Gauge	Qty/Box
Letter - Long Side Seal	9" x 11-1/2"	3 mil	100
		5 mil	100
		10 mil	50
Legal - Short Side Seal	9" x 14-1/2"	5 mil	100
		10 mil	50
Menu - Short Side Seal	11-1/2" x 17-1/2"	5 mil	100
		10 mil	50

HeatSeal® Clear Pouches

Card Size

Description	Dimensions	Gauge	Qty/Box
Badge	2-9/16" x 3-3/4" *	5 mil	100
Business Card	2-3/16" x 3-11/16"	5 mil	100

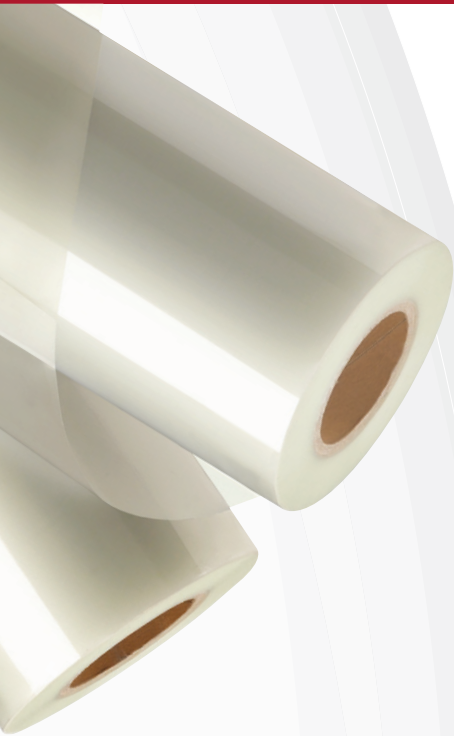
* Available with and without slot

Specialty Pouches and Enhancement Supplies

Item #	Description	Color/Finish	Qty/Box
Z1122897	Badge Tag W Photo ID	Badge Clip W Vinyl Strap	100

Enhancement Supplies

Take you beyond ordinary lamination.



How to choose the right film finishes for your products:

Clear/Gloss

Brilliant, high-polished look that enhances color and sharpens definition for a dramatic visual impact

Lustre

Adds a sparkling sheen for richer color, with a semi-reflective finish for higher contrast and lower glare

Matte

Offers a flat, non-reflective finish that deepens colors and hides imperfections, perfect for images displayed in direct light

To view our full line of products visit our website or call us for more information

Pouch Lamination Accessories

Laminating cabinet

This locking cabinet is built to support Binding machines up to 35" and 200 lbs while providing storage for supplies. It rolls easily to your work area on casters and features a pullout extension for added workspace and convenience.



Laminating cabinet

Item #	Description
Z1154314	Laminating/Binding cabinet

Table Top Laminators

FOTON® 30

World's first fully-automated desktop laminator with auto-cartridge! The GBC Foton 30 does all the work for you. Simply place your documents in the tray, press start and walk away.



- Machine feeds, laminates and trims automatically, giving you time to multitask on other projects
- Pouch-free design makes lamination as easy as pressing a button. Machine automatically starts once warmed up.

Item #	Description
FOTON30120NA	GBC Foton 30 Automatic Desktop Laminator

Pinnacle™ 27 EZLoad®

A great laminator for schools, the Pinnacle 27 EZload Thermal Roll Laminator is packed with time-saving, user-friendly features. From its EZload technology which eliminates film loading mistakes to its visual/audible warm-up alert, built-in trimmer and more, this laminator is an easy choice for busy educators.



- Features an 8-10 minute warm-up time with an LED light and audible alert signal to let you know when warm-up is complete

Item #	Description
1701720EZA	Pinnacle 27 EZload Thermal Roll Laminator
1701700A	Pinnacle 27

Table Top Laminators

HeatSeal® Ultima™ 35 EZLoad

Laminates up to 12" wide. Compatible with 1.7 to 5 mil EZLoad film. One minute warm-up time. Fixed speed, 36" per minute. Reverse motor function. Integrated trimmer. Auto shut off. Includes starter supply of roll film.



Item #	Description
1701680A	HeatSeal Ultima 35 EZLoad

Ultima™ 65 EZLoad

Laminates up to 27" wide and 10' per minute. Compatible with both EZLoad film and standard film. 20 minute warm-up and 1-touch keypad deliver ease-of-use. Includes auto shut-off, standby mode and reverse function. Motorized reverse function helps clear film wraps or jams. Ideal for large schools and offices.



Item #	Description
1710740B	27" Roll Laminator
1880200	Ultima 65 EZLoad Ready Laminator + EMA bundle
1880201	Ultima 65 EZLoad Ready Laminator+ 4 rolls of 3000004EZ load film + EMA bundle
1880202	Ultima 65 EZLoad Ready Laminator+ 4 rolls of 3000004EZ load film bundle
1880305A	Ultima 65 EZLoad Laminator + 4 rolls of 3000004EZ load film + EMA and Install and Training

Ultima™ 55 EZLoad

Laminates up to 27" wide and 10' per minute. Ultima 55 is compatible with EZLoad film only. Produce posters, signs, flash cars and more!

Built in trimmer and footage counter, alignment guides, flow forward and reverse functions to remove jams and more. Ultima 55 Desktop Roll Laminator has all the features for your laminating needs!



Item #	Description
1710755EZ-A	Ultima 55 EZLoad Laminator
WSM650012	Ultima 55 EZLoad Laminator + EMA Bundle
WSM650011	Ultima 55 EZLoad Laminator + EMA + 4 rolls of 3000004EZ load film
WSM650010	Ultima 55 EZLoad Laminator + EMA + 4 rolls of 3000004EZ load film and Install and Training

DID YOU KNOW?

Lamination was invented in the 19th Century when a dentist named Dr. Morris M. Blum used a dental laminate (AKA a dental veneer) to laminate a picture of his wife!

Lamination increases durability of print materials, allowing for frequent long term use

Table Top Laminators

Catena Series

Designed to laminate and mount prints from color printers and copiers, the Catena Series provides a simple way to finish your full-color digital output. These models feature heated rollers for cost effective finishing using thermal films and can also run pressure-sensitive films for additional applications.

Catena laminators are...

- Easy to use
- Versatile
- User friendly
- Provide superior quality

Catena laminators can run...

- Pressure sensitive films
- Thermal films
- Thermal and pressure sensitive mounting boards

Catena 35

The Catena 35 tackles demanding lamination jobs with ease and efficiency to keep your small print shop, office or institution running smoothly.

- Provides both thermal lamination and mounting applications for a wide range of projects up to 12" wide, including signage, maps, POP displays and more
- Mounting gap lets you mount jobs to foam board up to 1/4" thick quickly and without frustration



Catena 65

The Catena 65 tackles demanding lamination jobs with ease and efficiency to keep your small print shop, office or institution running smoothly.

- Provides both thermal lamination and mounting applications for a wide range of projects up to 27" wide, including signage, maps, POP displays and more
- Mounting gap lets you mount jobs to foam board up to 1/4" thick quickly and without frustration



Item #	Description
1715835	Catena 35 12" Wide Laminator
1715845	Catena 65 27" Wide Laminator

Xyron® Laminators

Xyron Laminators

Cold laminator with cutter on the back. Laminator uses aggressive adhesive coupled with high pressure rollers. Environmentally safe options.

XM2500

Laminating is made easy with the Xyron XM2500 cold laminator. Simply place item on feed tray, turn handle, and remove when completed, its that easy. Cold lamination means you can trim your documents immediately after lamination. Does not come preloaded to allow users to configure units to best suit their needs!



Item #	Description
XM2500	25" Cold Laminator

XM4400

The XM4400 is your complete professional document finishing system. Instantly applies laminate, adhesive or both without heat. Perfect for posters, displays, mock-ups, banners, signs and other large format output. Offering three solutions in one easy-to-use package, instantly applies laminate, adhesive, or both without heat or electricity. The XM4400 makes professional document, signage and poster finishing up to 42" wide fast and easy. Aggressive adhesive, coupled with high pressure rollers, improves both transfer and bonding qualities. Allows even, edge-to-edge adhesive application. Environmentally safe.



Item #	Description
4400-00-01	Xyron 4400 machine 44" wide

DID YOU KNOW?

- ✓ Cold laminators save energy and are much less likely to wrinkle or cause bubbles when laminating.
- ✓ Lamination adds protection against fingerprints, smudges, stains, tears and abrasions!
- ✓ Laminating not only increases longevity of your print materials, it's also easier to keep them sanitized!

Wide Format Laminators



Protect YOUR investment by purchasing an **Extended Maintenance Agreement** from GBC



GBC offers all equipment purchasers the opportunity to protect their investment.

Service can be requested through our call center at 800.723.4000

SPIRE Laminators

The SPIRE line offers the application versatility and labor saving benefits without the high price tag. All models are equipped with the laminating and mounting features needed to create profitable trade show graphics, backlit rigid displays and vehicle graphics.

SPIRE III 44T & 64T Thermal Hot/Cold laminators

Within this level of SPIRE laminators GBC brings to you a 44" and a 64" laminator with full top and bottom thermal capabilities. The laminators offer independent heat controls for top or bottom rollers. This great feature opens the door for a wider array of applications as it allows you to use a hot film on top with a cold adhesive on the bottom.



Item #	Description
1737174	SPIRE III 44T
1737175	SPIRE III 64T

Wide Format Laminators

SEAL® 54 EL

54" wide cold laminator. Optional add ons roll trough, leveling feet and image guide.



SEAL® 65 EL

65" wide cold laminator. Optional add ons roll trough, leveling feet and image guide.



SEAL® 62 Base

62" wide with top heat assist temperature up to 107° F. Optional add ons roll trough, leveling feet, image guide, rear power take up and lower take up with autogrip shaft. Great fit for vehicle wraps.



SEAL® 62 Pro S

62" wide thermal laminator with temperatures up to 284° F. Single sided heat. Includes cantilevered shaft Optional add on includes roll trough.

SEAL® 62 Pro D

62" wide thermal laminator with temperatures up to 284° F. Dual sided heat. Includes cantilevered shaft Optional add ons include slitter, fan bank and roll trough.



SEAL® 65 Pro MD

65" wide thermal laminator with temperatures up to 270° F. Cantilevered auto-grip shafts. Bi-directional operation. Optional add ons include slitter assembly and extra single unit slitter.

Why invest in wide-format lamination?

- Provides a high return on a small investment
- Offers a quick turn around for an on-demand industry
- Creates a competitive advantage and enhances profitability

Benefits

- Enhance colors
- Create great mounted graphics
- Add texture and preserve wide format prints, signs, banners, posters, maps and more for long term use
- Easily create new and profitable applications just by changing the film

The SEAL logo, featuring a stylized blue 'S' above the word 'SEAL' in a bold, blue, sans-serif font.

Flatbed Applicator for Rigid & Flex Media



Flatbed Applicator For Rigid & Flex Media

The fully equipped multipurpose applicator that gives you access to the superior production method. Its unique tilted table can reduce shipping costs and make entering doors easier. Fast assembly and easy operating.

- Tilted table for easier entrance and cost savings
- Side trays easily store media and provide capability to apply large format banners
- Durable 130mm diameter silicon roller has long lifetime and can meet different laminating and mounting requirements
- Media holder at the end of the table

Working width	5.25 ft
Working length	9.8 ft
Table width	6.6 ft
Table length	12 ft
Table Height	3.7 ft
Up and down	Pneumatic
Working thickness	2 in
Safety glass	Yes
Glass thickness	0.39 in
Working type	Manual
Heated method	None
Roller	Silicon (130mm diameter)
Side Trays	Yes

Get creative with your displays!

Use this table to laminate banners, mount images, apply transfers to vinyl graphics, or simply as a work station for cutting and trimming.

Film - Large Format



Our thermal films are engineered to meet the high demands of the wide format market. Provides excellent protection, clarity and rigidity. Perfect for a wide range of professional applications.

Available in a wide range of finishes including clear, matte and lustre.

Octiva® Thermal films are thermally activated at approximately 230F in varying thickness with 3" cores.

Octiva Light Thermal Films	
Description	Film Thickness
Gloss	5 mil

Octiva Thermal Films	
Description	Film Thickness
Gloss	1.5 mil
	3 mil
	5 mil
	10 mil
Lustre	3 mil
Brilliant Color Matte	3 mil
Heat-set	2 mil

Lo-Melt film is activated at a lower temperature of approximately 185F making it ideal for laminating heat-sensitive inkjet prints. It provides rigidity and high quality to protect images.

Lo-Melt Films	
Description	Film Thickness
Gloss	3 mil
	5 mil
	10 mil
Matte	3 mil
Lustre	3 mil

Mounting Adhesives

GBC standard mounting adhesives are constructed with an acrylic adhesive coating on both sides of a polyester carrier. One side provides a permanent bond to the graphic while the other side is used to adhere to boards or other rigid substrates.

A range of adhesives from low tack (Arctic® Lo-Tack) to permanent (Arctic Vue- Thru) allows for mounting to a diverse range of surfaces such as windows and walls

Arctic Dura Mount is our most popular mounting adhesive. Bonds well to porous, non-plastic surfaces—perfect for posters, digital prints and price-sensitive projects

Arctic White Mount is a white polyester carrier coated with Duramount adhesive. An excellent choice for mounting onto black Gatorfoam and other colored boards

Our full selection of mounting adhesives are available at www.GBC.com



Film - Large Format

Film type

Polypropylene (OPP)

Polypropylene films provide a reliable and vivid finish at a cost effective price

Polyester (PET)

Polyester films provide a tough, durable finish for the most demanding applications

Lay-Flat (Nylon)

Nylon films resist curling to "lay flat" and minimize scratches from stacking and rubbing

Finishes

Clear

Clear gloss finish enhances colors and overall appearance

Matte

Clear film with a matte finish reduces glare

Scuff Free Matte

Clear film with a durable & scuff resistant matte surface

Adhesives

Standard adhesive

For most standard non-digital output applications

Digital adhesive

Specially designed adhesive for bonding to most toner based digital color output

Pressure Sensitive mounting Adhesives

– a pH neutral, double-sided adhesive film that provides a permanent bond. All mounting films are 3" core.

Pressure Sensitive Mounting Adhesives	
Description	Film Thickness
Dura Mount	1 mil
White Mount	1 mil
PrintMount Ultra	3 mil
PrintMount Plus	2.75 mil
Print Mount 831	2 mil
Optimount Ultra	3 mil
PrintMount removable Plus	3 mil
Gudy Window	1 mil

Pressure Sensitive Overlamine Films

– substrates coated with acrylic-based adhesives. All films are pH neutral and are on a 3" core.

Pressure Sensitive Overlaminates Films	
Description	Film Thickness
Gloss	3 mil
Lustre	3 mil
Matte	3 mil
Textured Matte	3 mil
Floor Guard	5 mil
UV Cast Sand	3 mil
Anti-Graffiti	1 mil
Write Erase	2 mil

Matched Component Trade Show Solutions

are film substrates coated with acrylic-based adhesives. All films are pH neutral.

Matched Component Trade Show Solution	
Description	Film Thickness
Light Barrier	11 mil

Printable Media - Aqueous, dye and pigmented media as well as media for solvent, Eco-solvent, UV and Latex printers.

Self Adhesive Vinyl	
Description	
Easy dot matte/clear	
Ultra Clear™ PET transparent	

Backlit Media	
Description	
Citylight superior LX	

Textiles	
Description	
Monet canvas	
Varitex	

Banner Vinyl	
Description	
Scrim Vinyl	

Rotary Trimmers

SmartCut® S618pro & S638pro Precision rotary trimmers

These durable heavy-duty trimmers are ideal for offices or schools. They trim a wide variety of materials including banners, posters, presentations and more. Also ideal for trimming laminated items.

- Stainless-steel rotary blade cuts in both directions
- Transparent cutting guide
- Alignment grid and ruler for accuracy
- Sheet capacity, 10 sheets (20 lb bond)



S618pro



S638pro

Item #	Description
1690040	S618pro, 18" rotary trimmer
1690050	S638pro, 38" rotary trimmer with stand and catch bin

Replacement Blade/Cutter Set for SmartCut Rotary Trimmers

Item #	Description
1690060	Works with SmartCut S618pro & S638pro

Foster - RotaTrim

Foster - RotaTrim Technical T Series

Heavy duty, large format rotary trimmer for demanding applications

- Robust trimmer with extra capacity for more challenging materials
- Self-lifting clamp mechanisms enables a single user to easily position and cut large materials
- Cuts almost any material from hardboard to tissue paper without adjustment
- Overload protection feature
- Range of cutting lengths from 2ft 2in up to 8ft 4in
- Ultra hard Sheffield D2 'Tool Steel' self-sharpening, precision engineered blades
- Large single square stainless steel guide rail completely eliminates head swivel
- Aluminum baseboard, end frames, head and side rule
- Completely safe and easy-to-use by people of all ages



Model #	Foster ID	GBC Item #	Cut Length		Paper Size Landscape	Overall Length		Cut Capacity		Weight	
			(mm)	(Inches)		(mm)	(Inches)	(mm)	(Inches)	(kg)	(lb)
60330	T1550	WSM551028	1651	65	A0+	2070	81.5	4.0	0.157	18.2	40
60350	T2150	WSM551029	2150	84½	2A0+	2530	99½	4.0	0.157	20.4	44.8
60360	T2500	WSM551030	2550	100¼	4A0	2870	113	4.0	0.157	23.1	50.8



To view our full line of products visit our website or call us for more information

AutoFeed+™ Shredders

Promising reliability, security, and time savings at a price point that's perfect for your home or office. Spend less time shredding and more time on other tasks. The line of GBC AutoFeed+ Shredders takes the manual work out of shredding to make your day easier.

Nothing stacks up against AutoFeed+

- Extra high sheet capacity, long run times, and large waste bin sizes so you can safely dispose of everything in one trip.
- Powerful induction motor shreds through documents, paper clips and staples, so you don't waste time doing prep work.



Smaller pieces of shredding. Bigger peace of mind.

- Micro-cut or super cross-cut technology produce smaller shreds for added security.
- For smaller loads, the manual feed feature can take in as many as 20 sheets at a time.
- Easy touch forward and reverse anti-jam technology minimize downtime and costly service calls.



60X



150X



230X

	HOME OFFICE/SMALL OFFICE			LARGE OFFICE/SHARED WORKSPACE			
Number of Users	1	1-2	1-5	5-10	5-10	10-20	20+
MODEL#	60X	150X	230X	300X	300M	600X	750X
Sheet Capacity (Auto)	60	150	230	300	300	600	750
Cut Style	Super Cross-Cut	Super Cross-Cut	Super Cross-Cut	Super Cross-Cut	Micro-Cut	Super Cross-Cut	Super Cross-Cut
Security	P-4	P-4	P-4	P-4	P-5	P-4	P-4
Cut Size (in/mm)	5/32" x 1 3/16" (4 x 30mm)	5/32" x 1 3/16" (4 x 30mm)	5/32" x 1 3/16" (4 x 30mm)	5/32" x 1 3/16" (4 x 30mm)	3/32" x 5/8" (2 x 16mm)	5/32" x 1 3/16" (4 x 30mm)	5/32" x 1 3/16" (4 x 30mm)
Run Time (min)	10	30	30	60	60	240	240
Bin Capacity (gal)	5.25	11.6	16	16	16	29	37
Auto Jam Reverse	Yes	Yes	Yes	Yes	Yes	Yes	Yes
Machine Dimensions	15" x 17" x 16"	15" x 17" x 25"	17" x 19" x 29"	17" x 19" x 29"	17" x 19" x 29"	21" x 23" x 38"	21" x 23" x 42"
Warranty (Years)	2	2	2	2	2	2 - Onsite	2 - Onsite
Cutter Warranty	7	8	10	20	20	20	20



300XM



600X



750X



Momentum™

Office Shredder Series

ADVANCED TECHNOLOGY

ENGINEERED FOR THE MODERN OFFICE

ACTIVE SENSING ANTI-JAM TECHNOLOGY

Measures the number of sheets being fed in real time to stop paper jams and misfeeds before they happen

BIN FULL INDICATOR

Takes the guesswork out of when it's time to unload

HIGH PERFORMANCE INDUCTION MOTOR

Advanced induction motor provides continuous* operation for more productivity

SHREDS MORE THAN PAPER

No need to remove staples or paper clips, most models also shred CDs and credit cards

ULTRA QUIET

Minimize distractions with under 65 dB of noise

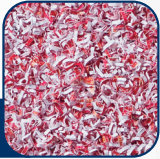




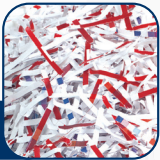
MODEL#	X20-07	X18-12	M12-12	X22-23	X26-32	M20-32
Sheet Capacity (Auto)	20	18	12	22	26	20
Cut Style	Micro-Cut	Micro-Cut	Micro-Cut	Micro-Cut	Micro-Cut	Micro-Cut
Security	P-4	P-4	P-5	P-4	P-4	P-5
Cut Size (in/mm)	5/32" x 1 3/8" (4 x 35mm)	5/32" x 1 3/8" (4 x 35mm)	5/64" x 19/32" (2x 15mm)	5/32" x 1 3/8" (4 x 35mm)	5/32" x 1 3/16" (4 x 30mm)	5/64" x 19/32" (2 x 15mm)
Run Time (min)	240	Continuous*	Continuous*	Continuous*	Continuous*	Continuous*
Bin Capacity (gal)	7	12	12	23	32	32
Jam Prevention	Active Anti-Jam Technology	Active Anti-Jam Technology	Active Anti-Jam Technology	Active Anti-Jam Technology	Active Anti-Jam Technology	Active Anti-Jam Technology
Manual Reverse	Yes	Yes	Yes	Yes	Yes	Yes
Machine Dimensions	16" x 12.6" x 23.0"	18.9" x 17.5" x 26.6"	18.9" x 17.5" x 26.6"	18.0" x 20.2" x 34.5"	20.1" x 21.8" x 40.5"	20.1" x 21.8" x 40.5"
Wheels	Yes	Yes	Yes	Yes	Yes	Yes
Warranty (Years)	2	2	2	2	2	2
Cutter Warranty (Years)	2	2	2	2	2	2

Choose the type of shredder system that's best for your needs.

Micro-cut



Cross-cut



Strip-cut



CX30-55 Cross-cut Shredder

Item no. 1758583BF

Cross-cut shredder with 30 sheet capacity, extra-large 55 gal bin and extra-wide paper entry. Shreds CDs, credit cards, paper clips and staples. Automatic oiling ensures smooth performance.

CX40-59 Cross-Cut Shredder

Item no. 1753210BF

Cross-cut shredder with 40 sheet capacity, super-large 59 gal bin and extra-wide paper entry. Chain drive gears to power through larger jobs. Automatic oiling ensures smooth performance. Shreds CDs, credit cards, paper clips and staples.

CHS10-30 Level 6 High Security Shredder

Item no. 1753290BF

Highest Level 6 security for extra protection of your sensitive information.

Meets NSA/CSS Specification 02-01. 10 sheet capacity, ample 30 gal waste bin. Automatic oiling and continuous duty run time ensure this shredder keeps up with your most secure shredding needs.

CM15-30 Micro-Cut Shredder

Item no. 1753300BF

Micro cut shredder provides security for shared environments. 15 sheet capacity and ample 30 gal bin for shared space shredding. Shreds CDs, credit cards, paper clips and staples.



Banner Stands

Roll-Up Banner

The Roll-Up Banner stand is a cost-effective system for short term signage or promotions. It is designed with a reinforced fitting for the pole to ensure the display stands straight - no tilting or leaning. The top panel profile clamps the media securely in place without the need of adhesive strips and pole attaches to the top panel from behind. The included carrying bag unzips lengthwise for greater ease and has extra padding over its entire length to ensure the display stays looking great.

Item #	Quantity	Color	Panel Size	Visible Height
4001270	6 units/package	Silver	33 x 84.65 in	33 x 78.74 in

Roll Up Deluxe Banner

The Roll Up Deluxe Banner stand has several Key features making it a superior banner stand for retail, POP and trade show graphics. Upgraded benefits include adjustable pole, storage inside the base for the pole and top bar, and a knob to adjust tension on the graphic. The top panel profile clamps your media securely in place without need for adhesive strips. Complete with a carrying bag, Roll Up Deluxe is ready to go!

Item #	Quantity	Color	Panel Size	Visible Height
4001269	4 units/package	Silver	33 x 83.66 in	33 x 78.74 in



Banner Stands

- Quick Assembly
- Includes carrying case
- Easy to transport



Kensington
Universal 3-in-1 Keyed
Laptop Lock
K62318WW



Kensington
Universal 3-in-1 Combination
Laptop Lock
K62316WW



Kensington
Universal AC Lock &
Charge Station
K62880NA



Kensington
USB-C and USB-A 10Gbps
Quad 4K Hybrid Dock
K33610NA



Kensington
Ergonomic Memory
Foam Seat Cushion
K55805WW



Kensington
SmartFit® Conform™
Back Rest
K60412WW



Kensington
Pro Fit® Ergo Wireless
Keyboard and Mouse
K75406US



Kensington
Duo Gel Mouse Pad Wrist
Rest
K62402AM



Kensington
Pro Fit® Ergo Wireless
Mouse
K75404WW





TruSens



SensorPod™

Placed across the room, SensorPod measures pollutants away from the purifier, then communicates with the purifier to ensure the full room benefits from purified air.



PureDirect Technology™

PureDirect proprietary technology splits clean air into two streams, delivering purified air comfortably and efficiently throughout the room.



TruSens Air Purifier with SensorPod Air Quality Monitor, Z-1000



TruSens Air Purifier with SensorPod Air Quality Monitor, Z-2000



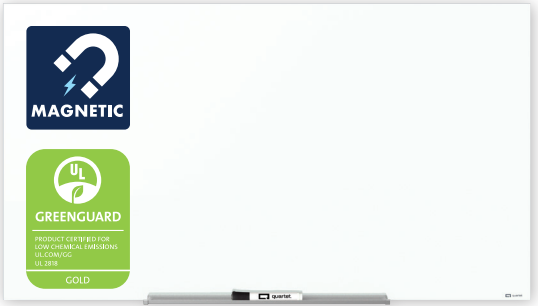
TruSens Air Purifier with SensorPod Air Quality Monitor, Z-3000



TruSens Performance Series Air Purifier Z6000AP



TruSens Performance Series Air Purifier Z7000AP



Quartet
InvisaMount® Magnetic Glass
Dry-Erase Board, 85" x 48"
G8548IMW



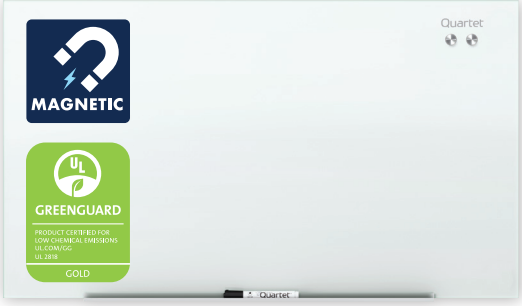
Quartet
Brilliance Glass Dry-Erase Board
72" x 48"
G27248W



Quartet
Whiteboard, 8' x 4',
Aluminum Frame
S538



Quartet
Natural Cork Bulletin Board,
4' x 3', Aluminum Frame
Z2304



Quartet
Infinity® Glass Magnetic
Dry-Erase Board, 48" x 36"
G4836W



Quartet
Glass Desktop Monitor Riser with
Dry-Erase Board, Adjustable Height
Q090GMRW01



Quartet
Glass Dry-Erase Desktop
Computer Pad, 18" x 6"
GDP186



Quartet
Glass Desktop Dry-Erase
Easel, 9" x 11"
GDE119



Quartet
Premium Glass Board Dry-Erase
Markers, Bullet Tip, Assorted
Colors, 4 Pack
79552-A



Quartet
Washable Whiteboard Eraser
3413820335



Quartet
Glass Dry-Erase Board
Magnets, Large, 6 Pack
285391

Glass Accessories

Make any space professional
with glass easels, desk pads
and dry erase panels.



Quartet
Quartet Designer Sign Stand, 59",
Freestanding, 11" x 17" Frame
Z7922



Quartet
Agile Glass Dry-Erase Easel,
Double-Sided, Adjustable Height
Q293066W





Swingline
747® Business Stapler,
30 Sheets, Rio Red
7471174736A



Swingline
High Capacity Heavy Duty Stapler,
210 Sheets, Black
7471190002



Swingline
Optima® 70 Electric Stapler,
70 Sheets, Silver
S7048210



Swingline
ClassicCut® Ingento™ Guillotine Trimmer,
24" Cut Length, 15 Sheet
341381162



Swingline
Commercial Electric Punch,
2 Holes, 28 Sheets
5050574532



Swingline
Extra High Capacity 3-Hole Punch,
Fixed Centers, 300 Sheets
7471174194

Customized Products

Vinyl Binders

The heavy gauge vinyl construction of our binders ensures excellent quality and durability. Available in a variety of attractive textures and finishes, GBC vinyl resists tearing and scratching. GBC can custom design binders to your exact specifications and business needs. Choose from a wide selection of decorating techniques that will enhance your company's image.



Customize • screen print • deboss • foil stamp • appliqué

Vinyl Folders and pouches

Custom design your company's message on our wide selection of vinyl folders and pouches.



Customize • screen print • deboss • foil stamp • appliqué

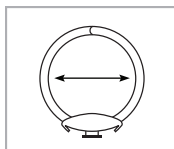
Sealed Inserts Vinyl Binders

GBC can design, insert and seal your art into a binder. Double polished, crystal clear overlay on the front, back and spine enhances the clarity of the binder artwork. Quality materials and heavy-duty construction make GBC binders the clear choice.

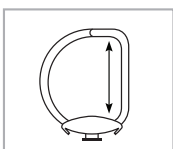


Customize • sealed inserts - digital or offset

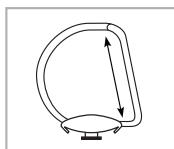
How to measure the ring size of your binder



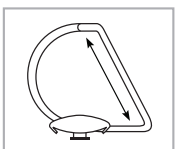
Round Ring



Straight D-Ring



EZ Load



Angle D-Ring



GBC offers

Unlimited customization of your company's documents. GBC's Information Packaging specialists will help you enhance your company's image with eye catching details.

All of your company's presentation materials will be designed to your specifications. With GBC's design services, everything works together to strengthen the professional image of your company. Your documents will make a persuasive statement - inside and out.

- Offset Printing • Screen printing
- Foil Stamping • Embossing/Debossing
- Window punching • Appliqué
- Die-cut options over a wide range of products



Customized Products

Printing and production options

Offset or digital print

Create high-impact presentation products with offset or digital printing. This printing option is perfect for paper materials.

Screen print

With the capability to print vibrant colors on almost any material, screen printing is a great way to get your brand noticed. This popular technique works well with most of the materials we offer.

Foil stamp

Use this when you need a more expressive solution. With foil stamping, foil is transferred onto the material using a die made from your artwork. Metallic or matte foil and a range of colors let you tailor your image.

Emboss/Deboss

Create a raised or lowered impression directly on the printed piece. Embossing and debossing give an upscale appearance to almost any logo or type. Use it with screen printing or foil stamping for an even more elegant look.

Die cuts

Create information windows or other custom shapes. Die-cut solutions break through the clutter and make your materials more distinctive.

Ask your GBC representative for more information on other printing and production options.

Certificate and Diploma Holders

Manufactured with the same heavy gauge vinyl as our binders or cover stock of your choice, design a customized document holder exclusively for your school by incorporating your logo in the design. Choose from a wide variety of vinyl or cover stock colors and finishes to achieve your school's look of distinction.



Customize • screen print • offset • deboss • foil stamp • appliqué

Poly Binders

For superior strength and economical construction, consider GBC's 100% linear polyethylene binders. The poly material resists wear, won't warp or scratch over time and is environmentally friendly. The one-piece construction of a poly binder makes it durable, easy-to-clean and temperature resistant. Available in a variety of colors, thickness and ring metals to suit your requirements.



Customize • screen print • die-cut

Index Tabs

Custom index tabs are the solution for organizing large quantities of printed materials. Crisp offset or screen printing on paper or poly index tabs ensures that all the sections of your document are identified and understood. Available in a wide assortment of colors, stocks and sizes to meet your specifications. Add mylar reinforcement for outstanding durability.



Customize • screen print • offset • foil stamp • emboss • die-cut

New

Customized tabs with matching binders

Pocket Folders

Secure proposals, presentations or other important documents in an attractive and durable package. Quality construction and decoration techniques create a classic, professional look. Choose from a wide variety of colors, stocks and styles.



Customize • screen print • offset • foil stamp • emboss • die-cut

Customized Products

Cover sets and Therm-A-Bind®

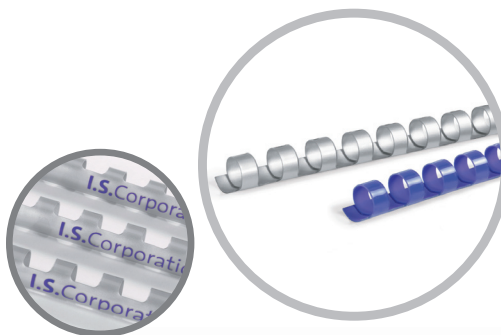
Maximize the impact of your presentations with custom designed cover sets from GBC. Customize your covers using your corporate colors and logo. Add foil stamping, embossing or special die cuts for a sophisticated, professional look. Choose from a wide selection of cover stocks and colors that are durable, attractive and can be beautifully decorated.



Customize • screen print • offset • foil stamp • emboss • die-cut

Combs (cerlox)

Imprint your company name, logo or corporate message on the spine of plastic bindings. Combine with custom cover sets to create a corporate standard for first-class, professional presentations, reports and proposals.



Customize • pad printing

Presentation Cases

Market your materials cost-effectively with stylish graphics on durable polyethylene cases. Choose from a number of different handles and latches for convenient carrying and security. Complete your presentations with the comprehensive, professional look of custom packaging.



Customize • screen print • die-cut

Contact your GBC representative for more products such as:

- Casemades,
- Hardcases,
- Audio-Visual Cases,
- Laminated Wraparound,
- Eco Binder,
- Stitched products
- etc...



SAVE MONEY AND PROTECT YOUR EQUIPMENT WITH GBC

What's included with Equipment Maintenance Agreements:

- Unlimited parts
- Unlimited travel to your location for repairs
- Unlimited labor costs from a factory trained service representative
- Priority phone response over non EMA service calls
- Scheduling priority over non EMA service
- Basic operator training
- No service lapse, you are contacted prior to expiration of EMA

Equipment Maintenance Agreements (EMAs) from GBC's Full Circle Service Team.

GBC provides service nationwide with over **50 Service Technicians** with a **95% satisfaction level**. Keep your equipment running at peak performance, whether you're buying it now or it's been running strong for years.

One price provides the **benefit of extended service coverage** – even if the product isn't manufactured by GBC.

Without protection, the cost to replace one key part could be more than the entire year of coverage.

Machines We Service

Electric/Hydraulic Cutters	Shrink Wrap Machines	Paper Folders
Paper Trimmers/ Substrate Cutters	Numbering Machines	Paper Joggers
Perforators/ Scorers	Collators	Paper Drills
Business Card Slitters	Booklet makers	Laminators
Shredders	Inserters	Staplers & Stitchers

FIND
THE BEST
SOLUTION
FOR YOUR
NEEDS ▶



For more information call:
(800) 463-2545

Unlimited Coverage

Investing in an Equipment Maintenance Agreement reduces your expenses and ensures the best possible protection for your equipment. One reasonable payment provides the benefit of unlimited service coverage. The labor and travel expenses of our Full Circle Service team members, as well as the cost of replacement parts, are all included in the original price of the service plan.

Product	*Estimated Typical Service Cost	1-Year Service Plan Cost	YOU SAVE
GBC ULTIMA 65	\$697.40	\$457.00	\$240.40
GBC MP2500IX	\$981.96	\$374.00	\$607.96
GBC SYSTEM 3 PRO-1	\$1,211.78	\$876.00	\$335.07
DUPLO DF-777	\$790.58	\$374.00	\$416.58

Multi-Year Maintenance Agreements

Save more by extending your Equipment Maintenance Agreement for up to five years. As the length of your agreement increases, so does your discount. A multi-year agreement not only protects your equipment in future years, but also allows you to lock in the current price.

Contract Length	1 Year	2 Years	3 Years	4 Years	5 Years
DISCOUNT	—	5%	8%	11%	13%
EMA rate if purchased with multi-year discount	\$100	\$95	\$92	\$89	\$87
Projected EMA rate if purchased annually*	\$100	\$102.50	\$105	\$107.50	\$110
Projected yearly savings	—	\$7.50	\$13	\$18.50	\$23
PROJECTED SAVINGS		7.3%	12.4%	17.2%	20.9%

Multi-Machine Maintenance Agreements

Further increase your savings by covering multiple products. With four or more machines placed under Equipment Maintenance Agreement, receive an **additional 10% discount for each machine.**

Vancouver

Edmonton

Montreal

Toronto

Calgary

Winnipeg

Ottawa

Atlantic Canada

For any customer queries, please email us at GBC@acco.com or
call us at 1.800.463.2545.

You can also visit us at www.gbc.com/en-ca



© 2024 ACCO Brands. All rights reserved. ACCO® is a registered trademark of ACCO Brands. GBC® is a registered trademark of General Binding LLC. All other marks are trademarks of their respective holders.

C050_24_L



ACCO Brands Canada Inc.
7381 Bramalea Road
Mississauga, ON L5S 1C4
CANADA
1.800.463.2545
www.gbc.com/en-ca